

Vancouver General Hospital

# VGH Emergency Medicine Research Newsletter

## Congratulations to our researchers

---

*Dr. KaWai Cheung  
and the smoking  
cessation team just  
completed a thousand  
patient randomized  
control trial of  
smoking cessation  
counseling*

---

**Brubacher JR**, Schuurman N, Macdonald S, **Pursell R**, Brasher P, Desapriya E, Pike I, Asbridge M. Evaluation of Traffic Safety Interventions in British Columbia. CIHR \$199,868 (2012 - 14).

**Cheung K.** Smoking Cessation for Emergency Department Patients. British Columbia Lung Association \$7500 (2012).

**Cheung K.** Smoking Cessation for Emergency Department Patients. Summer Student Research Program Grant, UBC Faculty of Medicine \$2000 (2012).

**Cheung K.** Smoking Cessation for Emergency Department Patients. British Columbia Cancer Agency \$2000 (2012).

**Filiatrault L.** Can Triage Nurse Initiated X-Ray in Accordance with the Ottawa Ankle Rules Shorten ED Length of Stay? UBC Summer Student Research Program \$3,000 (2012).

**Ho K**, Novak Lauscher H, Khan S, Stacy E. Inter-Cultural Online Health Network (iCON) for Chinese, Punjabi, and First Nations. BC Ministry of Health \$500,000 (2012).

**Ho K**, Novak Lauscher H. intercultural Online Health Network (iCON): Developing Live and Virtual Multi-cultural Peer Support Models. Public Health Agency of Canada \$76,926 (2012-13).

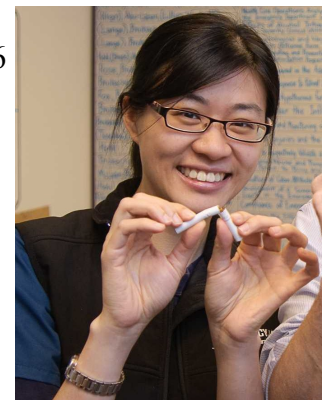
**Ho K**, Novak Lauscher H, Ignagni S. Mobile Digital Access to a Web-Enhanced Network (mDAWN) for Diabetes Management. Lawson Foundation \$100,000 (2012-2014).

**Ho K**, Novak Lauscher H, Haythornthwaite C, Currie L, Fels C. Harnessing the Social Web: Communities for Health and Wellness. Peter Wall Exploratory Workshop Grant \$24,945 (2012 – 13).

**Ho K**, Pedersen J, Hanon N. Telemental health medical student mentorship. Pritchard Foundation \$25,000 (2012-13).



Dr. Roy Pursell  
Road Safety  
& Toxicology



Dr. KaWai Cheung  
Smoking Cessation

### Inside this issue:

Awards and Grants **1-2**

Research Activities **2-4**

Research Policy **3**

Publications **4-7**

Abstracts and Presentations **8-11**

Research Staff **12**

## Congratulations Continued



Dr. Kendall Ho  
Knowledge Translation  
& eHealth

---

*Dr. Kendall Ho is an international expert in the field of technology enabled knowledge translation*

---



Dr. Jeff Brubacher,  
VGH EM Research  
Director

**Ho K**, Novak Lauscher H, Wisener K, Zibrik L. Barriers to eHealth Adoption: literature review. Health Canada \$24,980 (2012 – 13)

**Hohl C**. Validation of a Screening Strategy for Adverse Drug Reactions in the Emergency Department. New Investigator Award. CIHR \$300,000 (2012 - 17)

**Hohl C**, Brasher P, Bryan S, Goodland H, Green L, Lang E, Perry J, Reddekopp LN, Rowe BH, Stiell IG, Wanbon RG. Meetings Plannings and Dissemination Grant: Planning the Evaluation of Medication Review. CIHR \$24,997 (2012 – 13).

Perry J, Bordundvaag B, Emond M, **Hohl C**, Lee JS, Sharma M, Sivilotti ML, Stiell IG, Wells GA, Worster A. Clinical Decision Rule for High Risk TIA Patients in the ED. CIHR \$1,059,583 (2012 – 16).

**Pursell R**, Kent D, Leong D. Investigation Into the Use of Poison Centre Data in British Columbia for Product Vigilance Activities Associated with Natural Health Products. Health Canada \$50,000 (2012).

Stockwell T, Cherpitel CJ, Bond J, Brache KR, **Brubacher JR**, Macdonald SA, Maclure M. Alcohol, stimulants and risk of injury: a multi-method emergency department study assessing the effects of gender, drinking context, and personality. CIHR \$522,556 (2012 – 16).

## Collaborative Research Policy

The VGH Department of Emergency Medicine has a tradition of producing high quality original research, and collaborating on the research initiatives of other VGH Departments or external groups. This academic mission must be balanced with the demands research places on Emergency Department patient care and teaching of Residents and Medical Students. In addition, simultaneous research projects may conflict with one another and may compete for the same patients as well as for the time and attention of our clerical, nursing, and medical staff. For these reasons, all potential studies which require signoff by the VGH Department of Emergency Medicine undergo internal review, approval, and prioritization.

It is expected that one or more members of the VGH Department of Emergency Medicine will be involved academically (as co-applicant on grants, and co-author on publications) on any significant peer-reviewed or investigator-initiated collaborative project conducted in the VGH Emergency Department. This involvement should commence during the development of the study protocol and the ED should receive appropriate acknowledgement for the role it plays for any such projects.

For further information on our research policy or to discuss a potential project please contact our Research Director (Jeff Brubacher; [Jbrubacher@shaw.ca](mailto:Jbrubacher@shaw.ca)).

## Research Activities

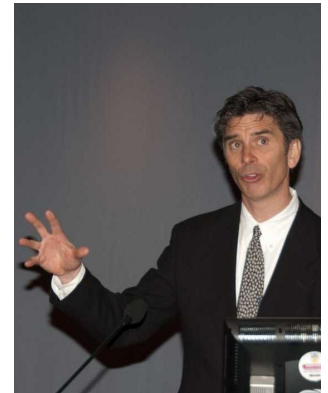
The VGH Emergency Medicine Research Division had another busy year in 2012. Over twenty research assistants and student volunteers worked on a wide range of research projects. Some of our research is highlighted here:

**Road Safety:** Our road safety research team of Dr Jeff Brubacher, Dr. Herbert Chan (PhD) and Dr. Roy Pursell enrolled the first thousand injured drivers for their study “Cannabis and Motor Vehicle Crashes: A multicentre culpability study”. This CIHR funded study has been launched in 8 trauma centres across BC and will determine the role of marijuana use in causing car crashes. Last spring the team received funding from CIHR and CIHI (\$198,868 over two years) for an evaluation of British Columbia’s new immediate roadside penalty (IRP) regime. In Sept 2012, Dr. Brubacher (PI) and Dr. Chan submitted a grant proposal to CIHR to study prescription medications and the risk of motor vehicle crashes. That study was just approved for funding (\$526,268) and will be launched this spring. Currently Drs. Brubacher and Chan together with numerous student volunteers are also conducting a pilot study based on interviews with drivers injured in a motor vehicle crash. This study will use a case-crossover design to investigate driver based risk factors for crashing.

**Adverse Drug Reactions:** Dr. Corinne Hohl (PI) is continuing her research into detection and early correction of emergency department patients who present with adverse drug reactions. Dr. Hohl is leading a demonstration project entitled “Implementation of an Emergency Department-Based Adverse Drug Event Screening Strategy: A Demonstration Project”. This regional program has screened over 150,000 patients in 12-months. It is funded by the BC Health Services Purchasing Organization & Vancouver Coastal Health Authority (\$1,762,201). In 2012, Dr. Hohl was awarded a CIHR New Investigator Award (\$300,000) and invited to join the CIHR-funded Drug-Safety and Effectiveness Network (DSEN).

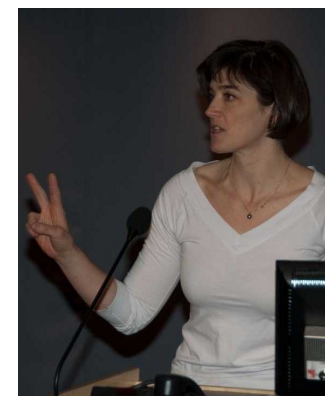
**Smoking Cessation:** Dr. KaWai Cheung and team continue their smoking cessation research. In a pilot study, they found that 60% of ED smokers would accept referral to Quit Now Services. Subsequently, they completed enrollment (1000 patients) for a randomized-controlled trial of smoking cessation counseling through Quit Now. Dr. Cheung’s team is also looking at the accuracy of patient perception that their ED visit was related to smoking by comparing patient impression with the role smoking has scientifically been shown to play. Finally Dr. Cheung is investigating whether smokers visit the ED more frequently than non-smokers.

**Research Education:** Riyad Abu-Laban, UBC Department of Emergency Medicine Research Director, led a highly successful second annual "NERD Block" (Novel Education in Research & Design) with Quynh Doan in the fall of 2012. This 1 month program involved 34 interactive small group sessions facilitated by faculty members from the Department of Emergency Medicine and Division of Pediatric Emergency Medicine on all aspects of research and



Dr. Riyad Abu-Laban  
Research Education

*Dr. Corinne Hohl and  
the adverse drug  
reaction team have  
screened over 150,000  
ED patients for  
adverse drug reactions*



Dr. Corinne Hohl  
Adverse Drug  
Reactions



Dr. Wailliam Lee  
Ankle X-Rays

---

*Drs. Lynn Filiatrault  
and Wailliam Lee are  
studying whether  
nurse initiated ankle  
Xrays reduce ED  
length of stay*

---

## Research Activities Continued

critical appraisal. Participants gained foundational knowledge, interacted with and learned about the research being done by a wide range of Emergency Medicine faculty members and developed and advanced their own research projects. A research publication on the NERD Block is in press with CJEM.

**Nurse Initiated X-Rays and ED Length of Stay:** Drs. Lyne Filiatrault, Wailliam Lee and their team launched a randomized control study in the VGH Emergency Department (ED) in August 2012. They examined whether triage nurse initiated x-ray in accordance with the Ottawa Ankle Rules will reduce ED length of stay. The study was introduced after educating 14 triage nurses who volunteered to participate. The team obtained funding from the Summer Student Research Program (SSRP) in 2012 and recruited Nancy Liu, a 2nd year medical student, and Lawrence Yau, a 3rd year undergraduate student, who both helped tremendously. The team plans to finish the study by summer of 2013.

**Prehospital Care:** Dr Eric Vu and collaborators seek to characterize peri-intubation physiology in major trauma and brain-injured patients who underwent endotracheal intubation by BC critical care flight paramedics. Dr. Vu is also assessing the translation of American Heart Association guidelines on CPR performance amongst BC First Responder programs. Over 1500 cardiac arrests were reviewed over a decade which included two iterations of AHA Emergency Cardiovascular Care guidelines. This research will inform Emergency Cardiovascular Care educators on first responder CPR and AED programs.

**Student Research:** Our research division gives students an opportunity to participate in emergency medicine research. Numerous volunteers help with our smoking cessation, road safety, and other research programs. A one month research elective gives students an opportunity to develop the protocol for a research project of their own. We often have summer research students through the UBC SSRP. Last fall, for the first time, we had a directed studies student with us for 4 months.

## Publications

1. Andolfatto G, **Abu-Laban RB**, Zed PJ, Staniforth SM, Stackhouse S, Moadebi S, Willman E. Ketamine propofol combination (ketofol) versus propofol alone for emergency department procedural sedation and analgesia: a randomized placebo controlled trial. *Ann Emerg Med.* 2012;59:504-12.
2. Ashwell Z, McKay MP, **Brubacher JR**, Gareau A. The Epidemiology of Mountain Bike Park Injuries at the Whistler Bike Park, British Columbia (BC), Canada. *Wilderness & Environmental Medicine.* 2012;23:140-145.
3. **Brubacher JR**, **Chan H**, Asbridge M. Development & Validation of a Canadian Culpability Scoring Tool. *Traffic Injury Prevention.* 2012;13:219-229.



Dr. John Tallon  
Prehospital care

## Publications Continued

4. **Brubacher JR, Chan H**, Brown D, Fang M, **Pursell R**. Police documentation of alcohol involvement in hospitalized injured drivers. Traffic Injury Prevention accepted Aug 2012.
5. Bruder EA, Ball I, Ridi S, Pickett W, **Hohl CM**. Single induction dose of etomidate versus other induction agents for endotracheal intubation in critically ill patients. Cochrane Database of Systematic Reviews 2012, #11.
6. Buxton JA, **Pursell RA**, Gibson G, Tzemiz D. Increasing access to naloxone in BC to reduce opioid overdose deaths. BCMJ 2012;54:231
7. Cherpitel C, Ye Y, Watters K, **Brubacher J**, Stenstrom R. Risk of injury from alcohol and drug use in the emergency department: a case-crossover study. Drug and Alcohol Review 2012;31:431-438.
8. Cherpitel CJ, Martin G, Macdonald S, **Brubacher JR**, Stenstrom R. Alcohol and drug use as predictors of intentional injuries in two emergency departments in British Columbia. Journal of Studies on Alcohol and Drugs 2012;31:431-438.
9. Djogovic D, Green R, Keyes R, **Sweet D**. et al. Canadian Association of Emergency Physicians Sepsis Treatment Checklist: Optimizing Sepsis Care in Canadian Emergency Departments. CJEM 2012;14:36-39.
10. Evans C, Nathens AB, Jennifer J, **Tallon JM**. An inventory of Canadian trauma systems: opportunities for improving access to trauma care. CJEM accepted Dec. 2012.
11. **Filiatrault L**, McKay R, Patrick DM, Quan G, **Brubacher JR**, Collins KM. Antibiotic Resistance in Isolates Recovered from Women with Community-Acquired Urinary Tract Infections (UTI) Presenting to a Tertiary Care Emergency Department (ED). CJEM 2012;14:295-305.
12. **Gill G, Fukushima E, Abu-Laban RB, Sweet DD**. Prevalence of advance directives among elderly patients attending an urban Canadian emergency department. CJEM 2012;14:90-6.
13. Gregory SN, Vu MP, **Sweet DD, Vu EN**, Dhingra VK, Brown DRG, Simons RK, Papp AA. Provincial clinical practice guidelines for the management of major burn trauma. BCMJ 2012;54:456-464.
14. **Ho K**, Marsden J, Jarvis-Selinger S, Novak Lauscher H, Kamal N, Stenstrom R, **Sweet D**, Goldman R, Innes G. A Collaborative Quality Improvement Model and Electronic Community of Practice to Support Sepsis Management in Emergency Departments: Investigating Care Harmonization for Provincial Knowledge Translation. Journal of Medical Internet Research: Research Protocols 2012;1:12-22.
15. **Hohl CM, Brubacher J**, Hunte G, Wiens MO, Abu-Laban R, Singer J and S Sheps. Clinical Decision Rules to Improve the Detection of Adverse Drug Events in Emergency Department Patients. Academic Emergency Medicine 2012;19:640-649.



Dr. Lyne Filiatrault  
Quality Assurance

---

*Dr. Eric Vu is studying  
prehospital intubation  
of critically ill patients*

---



Dr. Eric Vu  
Prehospital Care



Dr. David Sweet  
Sepsis Research

---

*Dr. David Sweet is  
investigating ways to  
save lives of patients  
with sepsis*

---



Jan Buchanan, RN  
Office Manager

## Publications

16. **Hohl CM**, De Lemos J, **Abu-Laban R**. Emergency Hospitalizations for Adverse Drug Events. *New Engl J Med* 2012;366:859.
17. **Hohl CM**. In Response to Roulet et al.'s Letter to the Editor. *Acad Emerg Med* 2012;19:1314.
18. Lange RT, Iverson GL, **Brubacher JR**, Mädle B, Heran M. Diffusion Tensor Imaging Findings are Not Strongly Associated with Post-Concussional Disorder Two Months following Mild Traumatic Brain Injury. *J Head Trauma Rehabilitation* 2012;3:188-198.
19. Lange RT, **Brubacher JR**, Iverson GL Clinical Utility of the Protein S100B to Evaluate Traumatic Brain Injury in the Presence of Acute Alcohol Intoxication. *Journal of Head Trauma Rehabilitation* 2012;27:123-134.
20. **Filiatrault L**, Harriman D, **Abu-Laban RB**, FitzGerald JM, **Chahal AM**, **McKnight RD**. Compliance with the Canadian Association of Emergency Physicians' Asthma Clinical Practice Guidelines at a Tertiary Care Emergency Department. *CJEM* 2012;14:224-232.
21. Asbridge M, **Brubacher J**, **Chan H**. Cell Phone Use and Traffic Crash Responsibility: A Culpability Analysis. *International Journal of Epidemiology* Published online Nov. 2012
22. Macdonald S, Cherpitel CJ, Stockwell T, Martin G, Ishiguro S, Vallance K, **Brubacher J**. Concordance of Self-reported Drug Use and Saliva Drug Tests in a Sample of Emergency Department Patients. *Journal of Substance Use*, accepted Dec 2012.
23. Mak E, **Cheung KW**, Mondor F. In-flight Arterial Gas Emboli from a Ruptured Bronchogenic Cyst. *CJEM* accepted 2012.
24. Santana MJ, Stelfox HT, Asbridge M, Ball CG, Cameron P, Dyer D, Fortin CM, Francescutti LH, Jaffe KM, Kirkpatrick AW, Kmetik K, Kortbeek J, Moore L, Nathens A, Noseworthy T, Phan N, Rivara F, Singleton B, Straus S, Swiontkowski M, **Tallon JM**, Travers A, Zygun D. Development and Evaluation of Evidence-informed Quality Indicators for Adult Injury Care. *Annals of Surgery*, accepted Dec 2012.
25. Penciner R, Woods RA, **McEwen J**, Lee R, Langan T, Bandiera G. Core Competencies for Emergency Medicine Clerkships: Results of a Canadian Consensus Initiative. *CJEM* 2013;15:24-33.
26. **Pursell RA**, **Brubacher J**. Alcohol-related Traffic Fatalities Declining. British Columbia's Evidenced-based Approach to Addressing the Problem of Impaired Driving Produced Impressive Results after only 12 months. *BCMJ* 2012;54:90.
27. Russell J, **Sweet D**, Boyd J Wally K. Septic Shock Management and Challenges in Developing New Drug Therapies. *Open Access Emergency Medicine*, accepted 2012.
28. Sivilotti ML, **Abu-Laban RB**. Inhaling Smoke Causes Smoke Inhalation: Put That in Your Hookah Pipe! (editorial) *CJEM* 2012;14:3-4.

## Publications

29. **Sweet D**, Marsden J, Krause C, Ho K, Russell J. Sepsis: The Simple Stuff Saves Lives. *BCMJ* 2012;54:176-182.
30. **Tallon J. M.** Impaired Driving Charges in Injured Impaired Drivers Requiring Treatment in an Emergency Department: A Missed Opportunity for Physicians. *CJEM* accepted Dec 2012.
31. **Tallon JM**, Fell DB, Karim SA, et al. Influence of a Province-wide Trauma System on Motor Vehicle Collision Process of Trauma Care and Mortality: a 10-year Follow-up Evaluation. *Can J Surg* 2012;55:8-14.
32. **Tallon JM**, Flowerdew G, Stewart RD, Kovacs G. Outcomes in Seriously Head-Injured Patients Undergoing Pre-Hospital Tracheal Intubation vs. Emergency Department Tracheal Intubation. *International Journal of Clinical Medicine* 2013;4:78-85.
33. Teschke K, **Brubacher JR**, Friedman SM, Cripton PA, Harris MA, Reynolds CC, Shen H, Monro M, Hunte G, Chipman M, Cusimano MD, Smith Lea N, Winters M. Personal and Trip Characteristics Associated with Safety Equipment Use by Injured Adult Bicyclists: A Cross-sectional Study. *BMC Public Health* 2012;12:765
34. Teschke K, Harris MA, Reynolds CCO, Winters M, Babul S, Chipman M, Cusimano MD, **Brubacher J**, Friedman SM, Hunte G, Monro M, Shen H, Vernich L, Cripton PA. Route Infrastructure and the Risk of Injuries to Bicyclists: A Case-crossover Study. *American Journal of Public Health* published online Oct. 2012.
35. **Vu EN**, Peet HE, Bernklau RP, Wand RT, Wheeler SJ, **Tallon JM**. Prehospital use of hydroxocobalamin for cyanide toxicity in a rotary-wing primary aeromedical evacuation and critical care transport program, *Air Medical Journal* 2012;31:167-173.
36. **Vu EN**, Peet HE, Vu MP, Schlamp RS, Essery MJ, **Tallon JM**. Prehospital Blood and Intravenous Fluid Warmer in Primary, Secondary, and Tertiary Aeromedical Evacuation, *Air Medical Journal* 2012;31:167-173.
37. **Vu EN**, Schlamp RS, Wand RT, Kleine-Deters G, Wheeler SJ, **Tallon JM**. Prehospital Use of Tranexamic Acid for Hemorrhagic Shock in Primary and Secondary Aeromedical Evacuation. *Air Medical Journal* 2012;31:167-173.
38. Vu M, Griesdal D, Finlayson G, **Vu E**, Brown R, Dhingra V, Gregory S, **Sweet D**, Papp A. Provincial Clinical Guidelines for the Management of Major Burn Trauma". *CJEM* accepted 2012.
39. Winters M, Babul S, Becker HJEH, **Brubacher J**, Chipman M, Cripton PA, Cusimano MD, Friedman SM, Harris MA, Hunte G, Monro M, Reynolds CCO, Shen H, Teschke K. Safe Cycling: How Do Risk Perceptions Compare with Observed Risk? *Canadian Journal of Public Health* 2012;103:S42-S47.

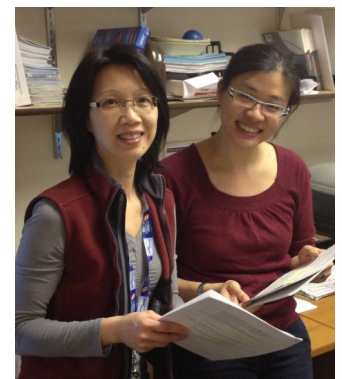


Herbert Chan (PhD)  
Road Safety

---

*Drs. Jeff Brubacher and Herbert Chan are investigating the contribution of drug driving to motor vehicle crashes*

---



Dr. KaWai Cheung  
& Kit Mung  
Smoking Cessation



Dr. Jill McEwen  
Undergraduate  
Medical Education

---

*Dr. Abu Laban will co-lead the third Novel Education in Research & Design (NERD) block in 2013*

---



Dr. Gina Gill  
Advanced Directives

## Abstracts and Presentations

1. **Abu-Laban RB**, Jarvis-Selinger S, Newton L, Chung B. Evaluation of a Novel Research Education Rotation For Royal College of Physicians and Surgeons Emergency Medicine (Abstract). Can J Emerg Med 2012;14:S34.
2. Andolfatto G, **Abu-Laban RB**, Zed PJ, Staniforth SM, Stackhouse S, Moadebi S, Willman E. Ketamine Propofol Combination (ketofol) versus Propofol alone for Emergency Department Procedural Sedation and Analgesia: a Randomized Placebo Controlled Trial (Abstract). Can J Emerg Med 2012;14:S18.
3. Asbridge M, **Brubacher J**, **Chan H**. Cell Phone Use and Traffic Crash Responsibility: A Culpability Analysis of Collision-Involved Drivers. Safety 2012 World Conference, Wellington, New Zealand. Oct 2012 Injury Prevention 2012;18(Suppl 1):A72.
4. **Brubacher J**. Drug Driving. British Columbia Chiefs of Police. Fairmont Hotel. Vancouver, May 2012.
5. **Brubacher J**. Drug Impaired Driving – Assessing the Risk. Fourth Annual Edmonton International Conference on Urban Traffic Safety. Edmonton, Alberta, Apr, 2012 (invited presentation).
6. **Cheung K**. Emergency Department Tobacco Cessation Counseling and Referral: A Pilot Study. 8th Annual UBC Medicine Undergraduate Research Forum, Vancouver, BC. Mar 2012.
7. **Cheung K**. Emergency Department Tobacco Cessation Counseling and Referral: A Pilot Study. Public Health Association of British Columbia Vancouver, BC. 2012.
8. **Cheung K**. Implementation and Evaluation of a Community Based Tobacco Cessation Counseling Program in the ED: A Feasibility Study. 4th Annual UBC Department of Emergency Medicine Research Day Vancouver BC. Apr 2012.
9. **Cheung K**. Tobacco Management: Costs of Tobacco, Benefits of Cessation. VCHA Hospital Based Cessation Tobacco Management Workshop, Vancouver, BC.
10. Cordeiro J, Novak Lauscher H, Amari E, Newton L, Chong X, **Ho K**. Piloting the Process of Technology-enabled Academic Detailing: Lessons for Integration. e-Health 2012, Vancouver, BC. May 2012.
11. **Ho K**, McDavid K, Kushniruk A, Hurley K. Embedding eHealth and Health Informatics into the Medical Curriculum: Considerations, Challenges, and Insights. Canadian Conference on Medical Education, Banff, Alberta April 2012.
12. **Ho K**, Novak Lauscher H, Stacy E, Khan S, McCartney K. Supporting Multicultural Populations in Self-management of Chronic Disease: The iCON Experience. BC Patient Safety and Quality Council Quality Forum, Vancouver, BC. Mar 2012.



## Abstracts and Presentations Continued

13. **Ho K**, Novak Lauscher H, Cordeiro J, Amari E. Technology Enabled Academic Detailing: from Research Project to Provincial Program. Australasian College of Emergency Medicine Annual Conference, Hobart, Tasmania. Nov. 2012.
14. **Ho K**. Imagining the Future: Using Technologies to Change Practice: 3 Near Trends Not to be Missed. Australasian College of Emergency Medicine Annual Conference, Tasmania, Nov 2012, keynote speaker.
15. **Ho K**. It's Getting Out of Hand: The North American Experience. Australasian College of Emergency Medicine Annual Conference, Tasmania, Nov 2012, keynote speaker.
16. **Ho K**. Knowledge Translation in Emergency Medicine: Opportunities and Challenges. Australasian College of Emergency Medicine Annual Conference, Tasmania, Nov 2012, keynote speaker.
17. **Ho K**. Leveraging eHealth in Education and Practice: Opportunities, Challenges, Lessons Learned (so far...). University of Georgia Health Professional Education Conference, Mar 2012, keynote speaker.
18. **Ho K**. Leveraging Information Technologies for Autism: Considerations. University of Florida Autism Institute Health Professional Education Day, May 2012, keynote speaker.
19. **Ho K**. mHealth for Autism: Considerations. University of Florida Autism Institute Health Professional Education Day, May 2012, keynote speaker.
20. **Ho K**. Mobile Health: The New Public Education Frontier. University of Florida Autism Institute Health Professional Education Day, May 2012, keynote speaker.
21. **Ho K**. Public Engagement through Information Technologies: Implications for Autism. University of Florida Autism Institute Health Professional Education Day, May 2012, keynote speaker.
22. **Ho K**. Technology-Enabled Academic Detailing: Pharmacists-Physician Synergy in Prescribing. Australasian College of Emergency Medicine Annual Conference, Tasmania, Nov 2012, keynote speaker.
23. **Hohl C**. Evaluating Adverse Drug Event Reports in Administrative Records of Emergency Department Patients. Invited by the Drug Safety and Effectiveness Network (DSEN), 3rd Annual DSEN Meeting, Ottawa, Ont. Oct 2012.
24. **Hohl C**. Adverse drug events - A New Frontier in Emergency Medicine Research; Queen's University, Emergency Medicine Research Day, Plenary Presentation Kingston, ON. Apr 2012.
25. **Hohl C**. Adverse Drug Events in Emergency Departments: from Clinical Care to Health Services Research. Invited by the Institute for Health Services Research, Canadian Institutes for Health Research & Michael Smith Foundation for Health Research, Vancouver, BC. Sept 2012.



Dr. Brian Chung  
Postgraduate  
Medical Education

---

*Seven CIHR funded studies are currently being conducted in our ED*

---



Dr. Erin Fukushima  
Advanced Directives



Dr. Anthony Chahal  
Asthma Guidelines

---

*Three of our  
researchers are  
supported by major  
salary awards*

---



Dale Stromberg, RN  
Headache Study

## Abstracts and Presentations Continued

26. **Hohl C.** Clinical Decision Rules to Identify Adverse Drug Events in Emergency Department Patients. Invited by the Drug Safety and Effectiveness Network (DSEN), 3rd Annual DSEN Meeting, Ottawa, Ont. Oct 2012.
27. **Hohl C.** Clinical Decision Rules to Improve the Detection of Adverse Drug Events in Emergency Department Patients; Rapid Fire Presentation, BC Patient Safety and Quality Forum, Vancouver, BC. Mar 2012.
28. **Hohl C.** How to Build a Research Program... and Maybe a Research Career; Queen's University Emergency Medicine Research Day, Plenary Presentation, Kingston, ON. Apr 2012.
29. **Hohl CM**, Kuramoto L, Rogula B, Yu E, Sobolev B. Adverse Drug Event Reports in Administrative Records of Emergency Department Patients. Canadian Association of Emergency Physicians (CAEP) Conference, Niagara Falls, ON. June 2012.
30. **Hohl CM**, Yu ES, Hunte G, **Brubacher JR**, Hosseini F, Argent C, Chan W, Wiens M, Sheps S, Singer J. Clinical Decision Rules to Improve the Detection of Adverse Drug Events in Emergency Department Patients. CAEP Conference, Niagara Falls, ON. June 2012. (Plenary presentation, 3rd Place Abstract Award Competition).
31. Karpov A, Yu E, Mok C, **Hohl CM**. Between-Rater Reliability of Historical Variables Used in a Routine ED Patient Evaluation. CAEP Conference, Niagara Falls, ON. June 2012.
32. Lange RT, Iverson GL, Shewchuk J, Mädler B, Heran MK, **Brubacher JR** Comparison of 6-Week Outcome Following Uncomplicated versus Complicated Mild Traumatic Brain Injury Archives of Clinical Neuropsychology. Presented at the National Academy of Neuropsychology Annual Conference, Nashville, TN, Nov 2012.
33. **McEwen JI**; Sachedina A; Du E, McEwen-Doris J. Virtual Patients in Resuscitation: The Use of Virtual Patients for Medical Students' Education in Trauma Resuscitation. The 8'th annual UBCMJ MUS Research Forum, Vancouver, BC, Mar 2012
34. Perry JJ, Stiell IG, Sivilotti MLA, Bullard, MJ, Sutherland J, **Hohl CM**, Émond M, Symington C, Andrew W, Lee JS, Mackey D, Pauls M, Lesiuk H, Wells GA. Validation of Clinical Decision Rules to Determine Risk for Subarachnoid Hemorrhage in Headache. Patients Presenting to the Emergency Department. CAEP Conference, Niagara Falls, ON. June, 2012.
35. Teschke K, Reynolds CCO, Harris MA, Cripton P, Chipman M, Cusimano MD, Babul S, Becker J, **Brubacher J**, Friedman S, Hay D, Hunte G, Shen H, Smith Lea N, Winters M. The Impact of Transportation Infrastructure on Risk of Injuries while Cycling: I. Non-Intersections. Velo-City Global 2012, Vancouver, June 2012.

## Abstracts and Presentations Continued

36. Teschke K, Reynolds CCO, Harris MA, Crompton P, Chipman M, Cusimano MD, Babul S, Becker J, **Brubacher J**, Friedman S, Hay D, Hunte G, Shen H, Smith Lea N, Winters M. The Impact of Transportation Infrastructure on Risk of Injuries while Cycling: II. Intersections. Velo-City Global 2012, Vancouver, June 2012.
37. Tuyt B, D'Souza K, **Chan H, Brubacher JR**. Alcohol and Injury Severity of Injured Drivers Involved in Motor Vehicle Crashes. The 8<sup>th</sup> annual UBCMJ MUS Research Forum, Vancouver, BC, Mar 2012.
38. **Vu E**. Human Factors in Critical Care Transport. Canadian Society of Respiratory Therapist Education Symposium. Vancouver, BC, June 2012
39. **Vu E**. Prehospital Blood and Intravenous Fluid Warmer in Primary, Secondary, and Tertiary Aeromedical Evacuation. Critical Care Transport Medicine Conference. Nashville, Tn. Apr 2012.
40. **Vu E**. Prehospital Use of Hydroxocobalamin for Cyanide Toxicity in a Rotary-wing Primary Aeromedical Evacuation and Critical Care Transport Program. Canadian Critical Care Conference. Whistler, BC. Feb 2012.
41. **Vu E**. Prehospital Use of Tranexamic Acid for Hemorrhagic Shock in Primary and Secondary Aeromedical Evacuation. Critical Care tTransport Medicine Conference. Nashville, Tn. Apr 2012.
42. Vu M, Griesdal D, Finlayson G, **Vu E**, Brown R, Dhingra V, Gregory S, **Sweet D**, Papp A. Provincial Clinical Guidelines for the Management of Major Burn Trauma. Canadian Critical Care Conference, Whistler, BC, 2012 - Best poster presentation *and* Critical Care Transport Medicine Conference, Nashville TN, 2012, Top 3 poster presentation; *and* American Burn Association Conference, Seattle WA, 2012 - Best poster presentation
43. Winters M, Babul S, Becker J, **Brubacher J**, Crompton PA, Friedman S, Harris MA, Reynolds CCO, Shen H, Vernich L, Techke K. Safe Cycling: How Do Risk Perceptions Compare with Actual Risk? Velo-City Global Conference, Vancouver, June 2012.
44. Wisener K, Andrew J, Brown L, Bainbridge L, Woollard R, Novak Lauscher H, **Ho K**, Michel T, Fedeles M, Liman Y, Behmardi P, Gillett N, Jarvis-Selinger S. eHealth Mentoring: Building Pathways to Health Careers for Aboriginal Youth. e-Health 2012, Vancouver, BC.
45. Yarema MC, Johnson DW, Berlin RJ, Sivilotti MD, Nettel-Aguirre A, Brant RF, Spyker D, Baily B, Chalut D, Lee JS, Plint AC, **Pursell RA**, Rutledge T, Seviour CA, Stiell IG, Thompson MD, Tyberg J, Dart RC, Rumack BH. Long Live the King! Comparing Prognostic Markers in Acetaminophen Poisoning Fatalities. European Association of Poison Centres and Clinical Toxicologists Annual Congress, London United Kingdom, May 30, 2012.

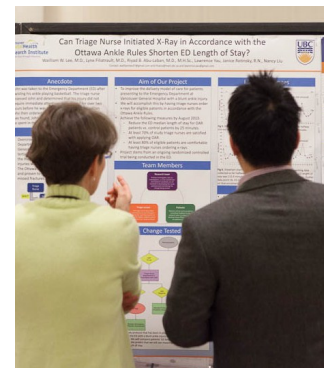


Angela Aquino  
Research Assistant  
Traumatic Brain Injury

---

*Our team includes  
over 20 research  
assistants and student  
volunteers*

---



Dr. Filiatrault  
admiring her poster

## Research Personnel

### Director

Jeff Brubacher (Jbrubacher@shaw.ca)

### Office Manager

Jan Buchanan

### Investigators

Riyad Abu-Laban	(Research Education)
Jeff Brubacher	(Road Safety)
KaWai Cheung	(Smoking Cessation)
Lyne Filiatrault	(Quality Assurance)
Kendall Ho	(Knowledge Translation)
Corinne Hohl	(Adverse Drug Reactions)
Roy Purssell	(Road Safety)
David Sweet	(Sepsis)

### Advisory Committee:

Riyad Abu-Laban, MD, MHSc  
Jan Buchanan, RN  
Jeff Brubacher, MD, MSc  
Brian Chung, MD  
Lannon de Best, RN  
Corinne Hohl, MD, MHSc  
Doug McKnight, MD  
Roy Purssell, MD

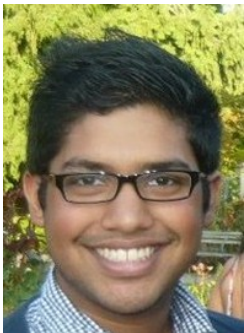
### Research Associate (Road Safety)

Herbert Chan, PhD

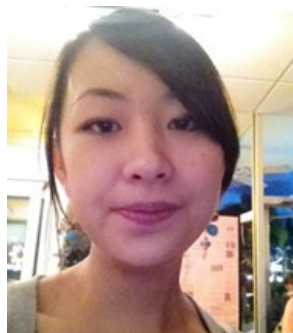
### Research Coordinators:

Angela Aquino (Traumatic Brain Injury)  
Dale Stromberg (Headache Study)  
Setareh Rouhani (Road Safety)

## Some of our students and volunteers



Karan D'Souza  
Undergraduate Science  
Directed Studies  
Road Safety



Jennifer Li  
Year 3 Medicine  
Cannabis & MVCs



Daniel Ting  
Year 4 Medicine (Queen's)  
EM research Elective



Vahid Mehrnough  
Physician  
Driver Interviews



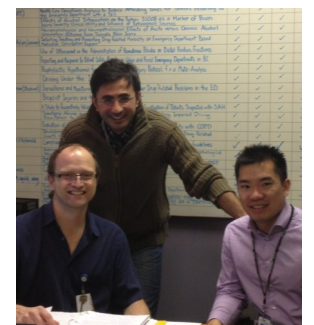
Shayan Shojaie  
Smoking Cessation



Jonathan Lee  
Year 3 Medicine  
Driver Interviews



Ben Tuyp  
Year 3 Medicine  
Summer Research Program



Dr. Brubacher and  
Volunteers